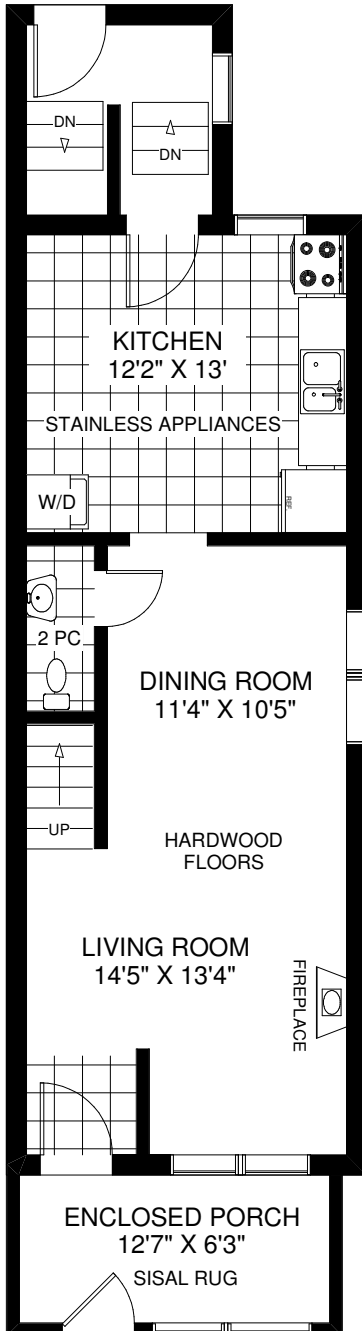


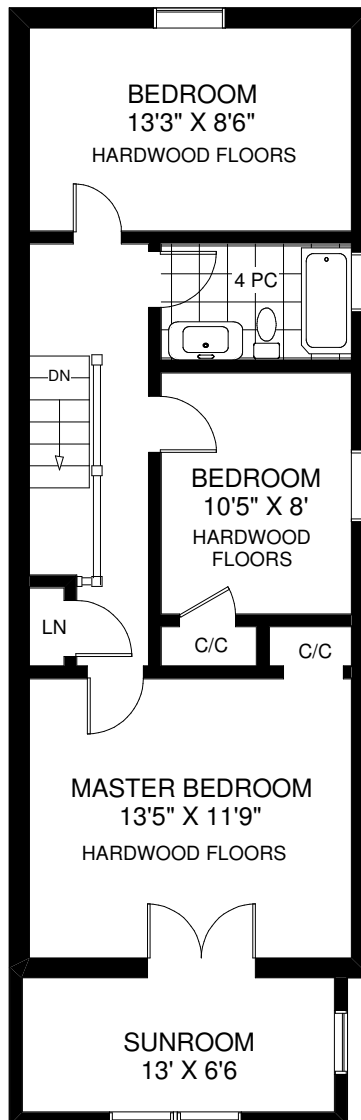
# 67 VERNON STREET

**THE JULIE KINNEAR TEAM**  
**Royal LePage Real Estate Services Ltd.,**  
**Brokerage**  
**(416) 762-8255**

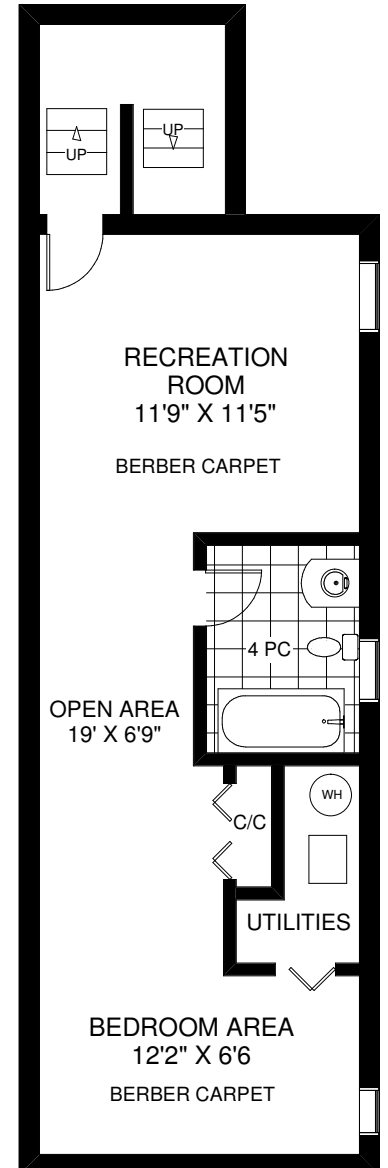
WALK-OUT TO  
INTERLOCKING PATIO



**MAIN FLOOR**  
 APPROXIMATELY 779 SQ FT  
 (INCLUDING ENCLOSED PORCH)



**SECOND FLOOR**  
 APPROXIMATELY 699 SQ FT  
 (INCLUDING SUNROOM)



**LOWER LEVEL**  
 APPROXIMATELY 679 SQ FT

Note: Measurements & Calculations are approximate. Provided as a guideline only.

FLOOR PLANS BY KIM DORNEY  
 647-989-6526