



Check out the YouTube video at
www.LovelyTorontoCondos.com

Sophisticated Loft Living!

Stunning and much sought after **soft loft at The King East!** **Spacious north facing 1 bedroom + den and 2 full baths.** **10'6" exposed concrete ceilings and walls** ~ shows like a true designers model suite with nothing left to do but move in and enjoy.

Prime King East location – so close to lively St Lawrence Market and the Distillery District! The lucky buyer will get to move just in time for the summer **Pan Am Games** and be a part of the all the fun and exciting action. Live in one of downtown **Toronto's most vibrant neighbourhoods** close to every modern day amenity.

Extra-large balcony runs the full length of condo with unobstructed city views that go on forever! Gas barbeque hook-up for al fresco dining with friends and family!

Ownership of 1 underground parking spot and storage locker!

Great pied-a-terre, investor's opportunity or affordable condo for professionals / executive couples!

Suite Amenities:

- **Expansive living room layout** is ideal for entertaining. **Exposed concrete walls and ceiling,** bathed in natural light all year long from the **wall to wall windows with sliding glass doors that lead out to the balcony.** Feels much larger than it is with **10'6" ceilings**

318 King Street East #702

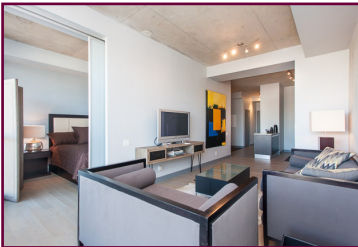
- **Sleek Scavolini kitchen!** **Stainless steel appliances** include a **"must have" gas stove.** Glass tiled backsplash, stone counters and ample cupboard and counter space including a **built-in breakfast bar** for casual dining.
- **The den** is currently being used as a dining room overlooking the kitchen for ease of catering to all your guests! Use the space to whatever suits your individual needs.
- **Gracious master bedroom!** Floor to ceiling windows, frosted glass door divider, **double closet** with sliding mirrored doors and a **4-piece luxurious en-suite bath!**
- The **2 spa-inspired 4 piece baths** come with rainhead showers, custom vanities, deep soaker style tubs with a glass partition wall.
- **Ensuite laundry with a front loading washer/dryer!** Lots of closet space throughout.
- **Pristine engineered wood flooring** throughout.

The Building ~ The King East

The King East redefines modern design on one of the most **historically significant corners of the original 10 blocks of the City of Toronto - King and Parliament.**

This uber modern condominium is **Hyde Park's** second loft project with **Lamb Development Corp.** Completed **March 29, 2013** with a total of 215 suites just 15 stories high. **Building amenities include: Concierge, party/meeting room, guest suites, visitor parking, security system, (barbeques allowed).**

Superior location just a **short stroll to the distillery district, waterfront and a 15 min walk to the financial core!** 318 King offers **easy access to the Gardiner/DVP** and is situated in a thriving location which is going through a **major revitalization with many area improvements and upgrades due to the Toronto 2015 summer Pan Am and Parapan American Games.** Check out <http://www.toronto2015.org> for all the dates, events and venues.



Julie Kinnear*, Jennifer Palacios*, Lissa Cline*,
Holly Chandler* & Tyler Delaney* Sales Representatives*

Office 416.236.1392 Direct 416.762.5949

julie@juliekinnear.com ♦ www.juliekinnear.com

The Julie Kinnear Team
Top 1% in Canada - by referral only™

Julie Kinnear
Jennifer Palacios
Holly Chandler
Tyler Delaney

Guiding you home



318 King Street East #702

Perfect Downtown Location!

318 King Street East offers **convenient access to Toronto's business & entertainment districts** popular with young professionals! With a WalkScore of 97/100, the world is your oyster to discover on foot!

Situated around the corner from one of Toronto's most popular landmarks The **St. Lawrence Market!** Home to over **200 food vendors**, frequented by tourists and locals alike. The market was founded in 1803 and was recently **ranked by National Geographic as one of the best food markets in the world.**

This upscale Corktown neighbourhood has a flourishing, classy nightlife with hip restaurants, galleries, bars & lounges in the **Distillery District, King & Queen Street.**

Lots of local shopping available on King, Sherbourne, Parliament & Queen Street East where you will find an eclectic mix of local stores, design and decorating stores that draw shoppers from all over Toronto.

Plenty of parks surround! St James Park, David Crombie Park a multi-faceted linear park that runs through the centre of the St. Lawrence neighbourhood along The Esplanade. This park includes pretty strolling & sitting gardens, a waterfall, a handball court, and a basketball court.

The Sackville playground located along King Street East has a tot park, basketball court & a wading pool. **The St. Lawrence Community Centre on the Esplanade** includes squash courts, a swimming pool, gymnasium, piano room, weight room & games room.

Go Green! Walkscore.com rates it a **98/100** for ease of public transportation. **World-class transit at your door!** The **Queen and King streetcars** connect to stations on the **Yonge-University-Spadina subway line**, while the Parliament streetcar connects passengers to the Castle Frank station on the Bloor-Danforth subway line. **Union Station is within walking distance as well.**

Motorists are only a few minutes from the Adelaide Street on-ramp to the Don Valley Parkway, and an equally short distance to the Gardiner Expressway and Lake Shore Boulevard



Taxes 2014: \$2704.05	Bedrooms: 1+ Den	#Baths: 2 x 4 Pieces	Possession: 30 days/TBA	Approx Sq Ft.:760
Locker: Ownership of 1 locker Level C Unit #42		Parking: Ownership of 1 underground parking spot Level C Unit #1		
Inclusions: Stainless steel: Fridge, gas stove , range hood, built-in dishwasher, microwave/convection oven, stackable front loading washer/dryer, electric light fixtures. Note: Furniture is available for sale; please speak to listing agent for a price list.				
Maintenance: \$497.02 month. Includes: Water, parking, building insurance, common elements. Hydro: \$360.00 Heat Pump: \$34.44				

For great info & links visit www.LovelyTorontoCondos.com

Julie Kinnear*, Jennifer Palacios*, Lissa Cline*
Holly Chandler* & Tyler Delaney* Sales Representatives*

Office 416.236.1392 Direct 416.762.5949

julie@juliekinnear.com ♦ www.juliekinnear.com

The Julie Kinnear Team
Top 1% in Canada - by referral only™

Julie Kinnear
Jennifer Palacios
Holly Chandler
Tyler Delaney

Guiding you home



Prospective purchasers should satisfy themselves as to the accuracy of the information contained in this featuresheet. All measurements are approximate. The statement contained herein are based upon information furnished by principals and sources which we believe are reliable, but for which we assume no responsibility. Not intended to solicit parties under any agency contract.