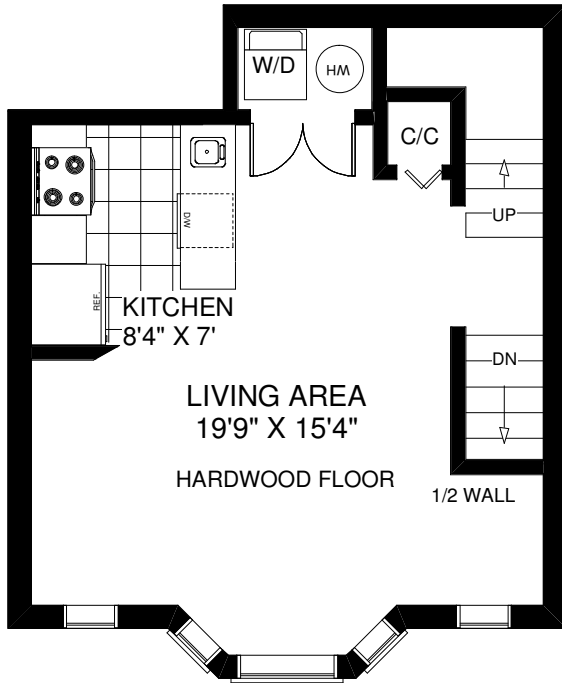
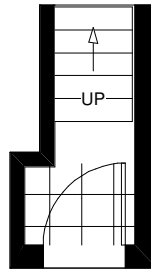


6D PORTLAND STREET

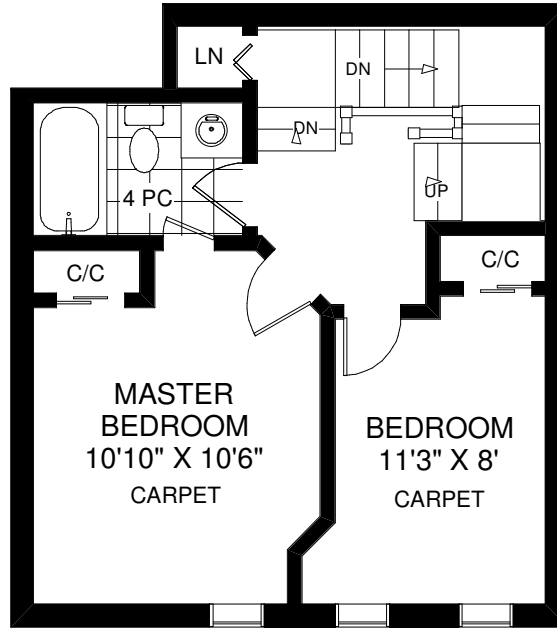
THE JULIE KINNEAR TEAM
Royal LePage Real Estate Services Ltd., Brokerage
(416) 762-8255



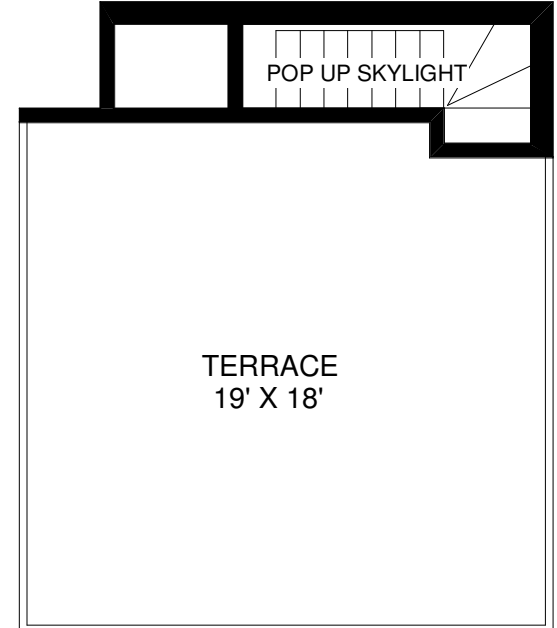
MAIN FLOOR



ENTRY



SECOND FLOOR



TERRACE
APPROXIMATELY 329 SQ FT

APPROXIMATELY 969 SQ FT

Note: Measurements & Calculations are approximate. Provided as a guideline only.