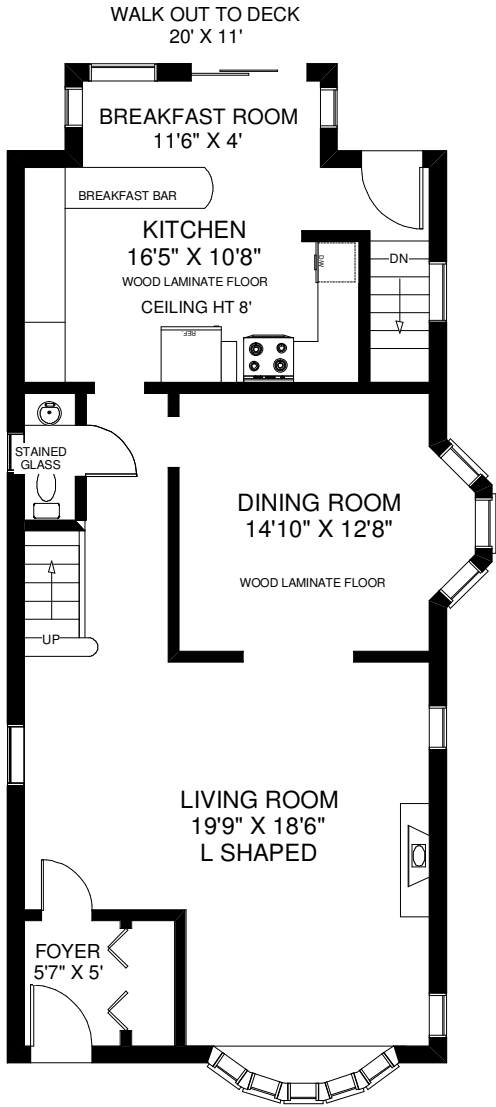
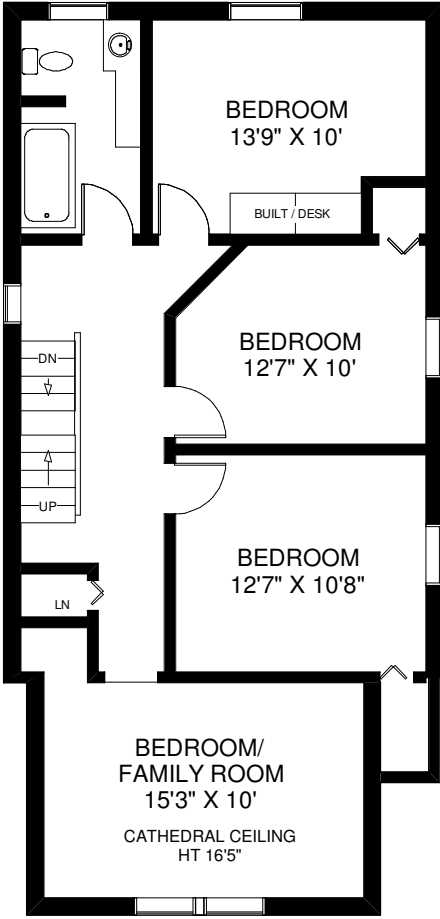


# 11 WALMSLEY BOULEVARD

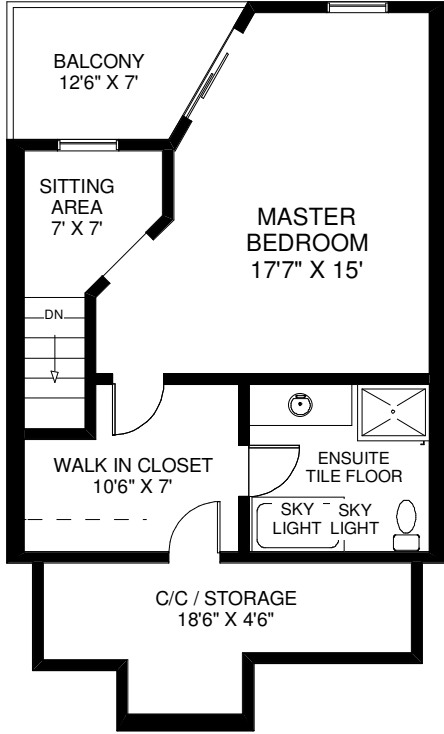
**THE JULIE KINNEAR TEAM**  
**Sales Representatives**  
**Keller Williams Neighbourhood Realty**  
**(416) 236-1392**



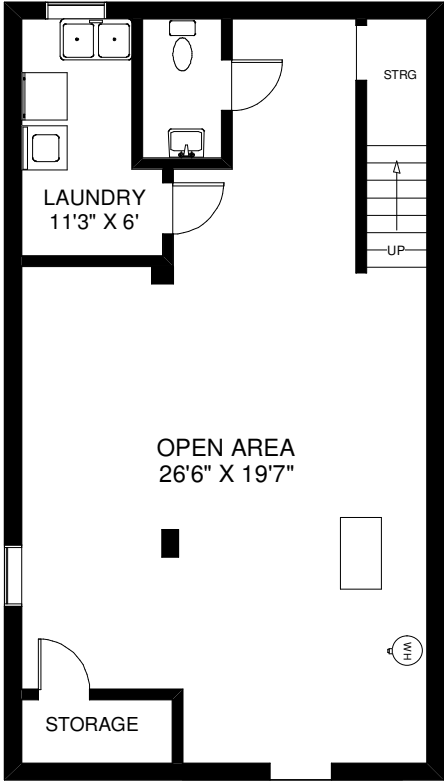
CEILING HT 8'7"  
**MAIN FLOOR**  
 APPROXIMATELY 1,030 SQ FT



CEILING HT 8'  
**SECOND FLOOR**  
 APPROXIMATELY 925 SQ FT



CEILING HT 7'9"  
**THIRD FLOOR**  
 APPROXIMATELY 640 SQ FT  
 (INCLUDING STORAGE)



ACCESS TO RAISED STRG  
 CEILING HT 7'  
**LOWER FLOOR**  
 APPROXIMATELY 800 SQ FT

Note: Measurements & Calculations are approximate. Provided as a guideline only.