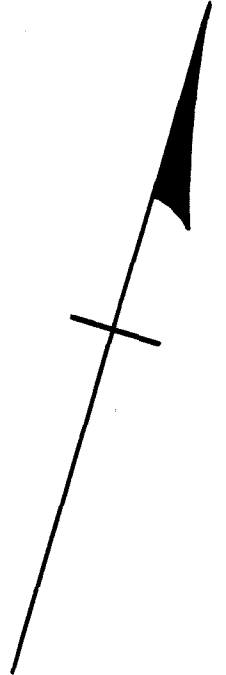
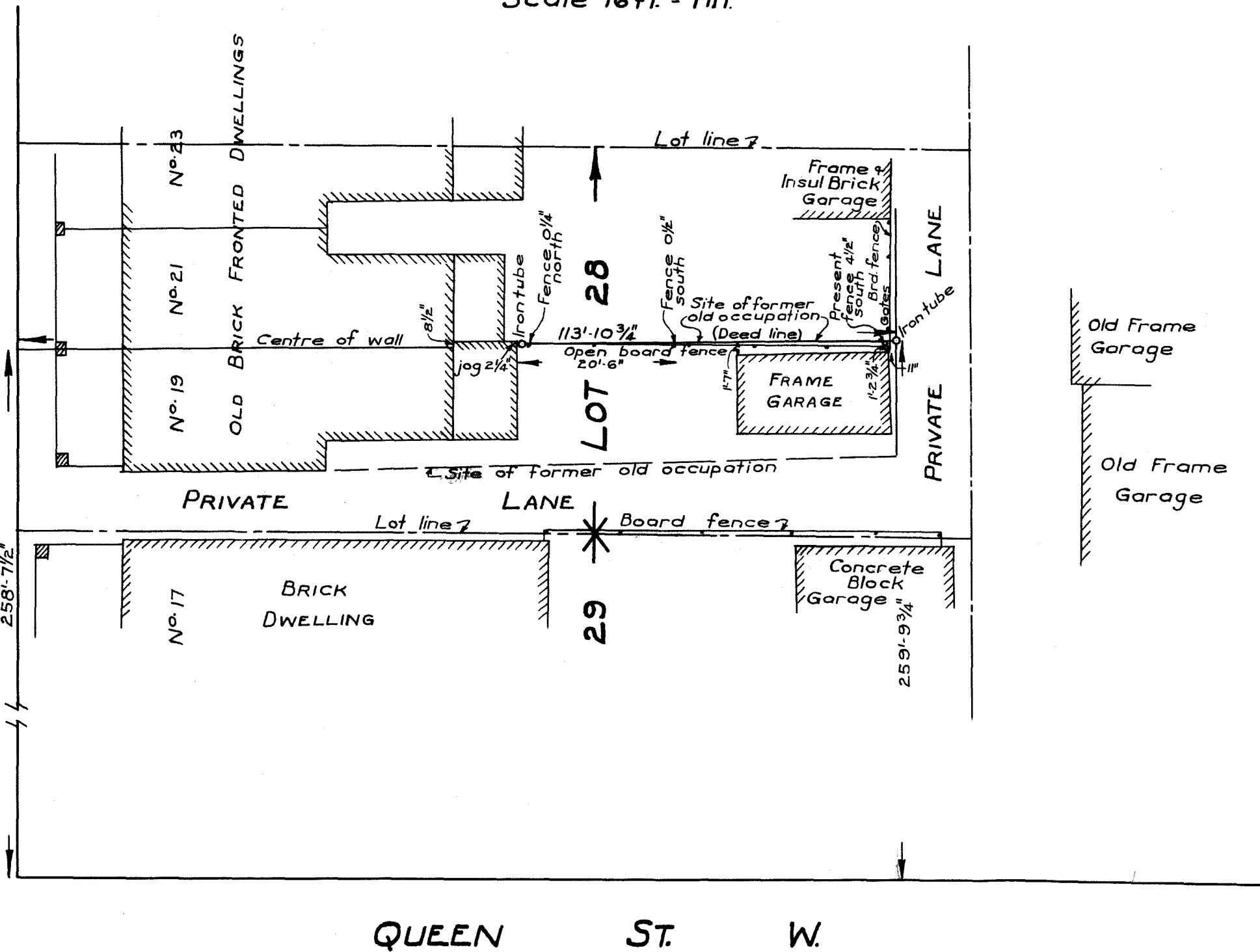


# PLAN SHOWING PART OF LOT 28, REG<sup>d</sup> PLAN 467 YORK TORONTO

Scale 16ft. = 1in.



148  
666



19.21 FULLER AVE.  
PL. 18, PL. 19  
RECORDED MAP  
22-8-28

Messrs. Baycroft, MacDonald & Thompson,

Speight, van Nostrand, Ward & Anderson.  
372 Bay St., Ontario Land Surveyors.  
Toronto, Per: *R.M. Anderson*  
28th Aug. 1958.