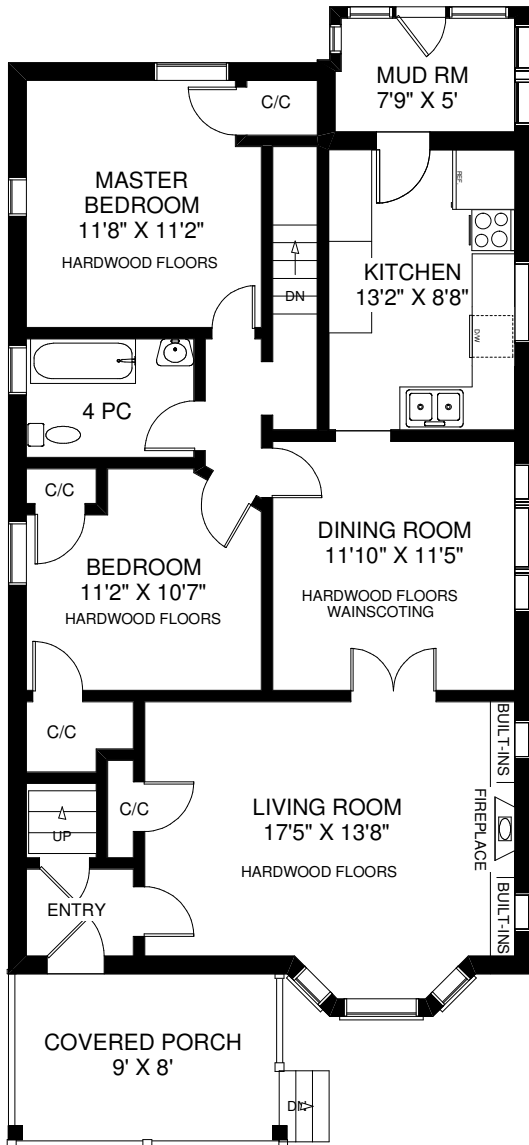


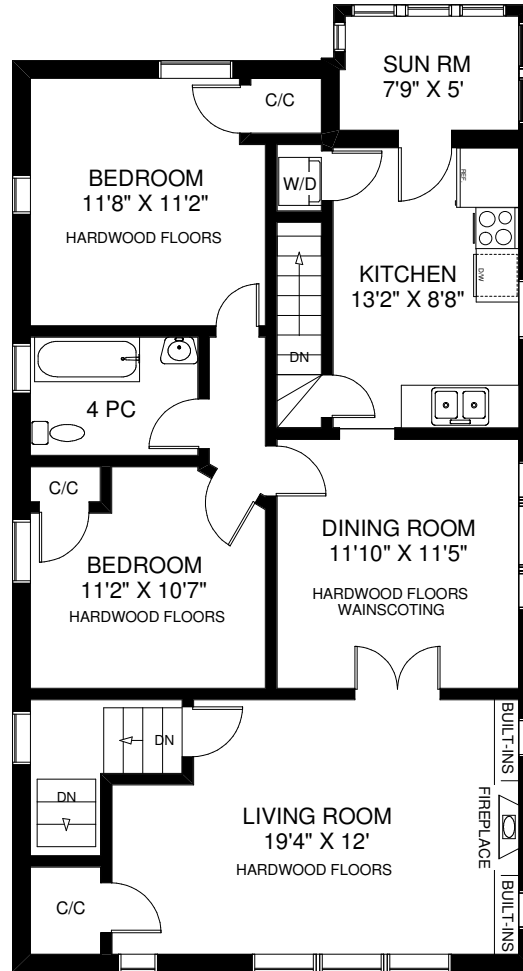
218 HOWARD PARK AVENUE

THE JULIE KINNEAR TEAM
Royal LePage Real Estate Services Ltd.,
Brokerage
(416) 762-8255

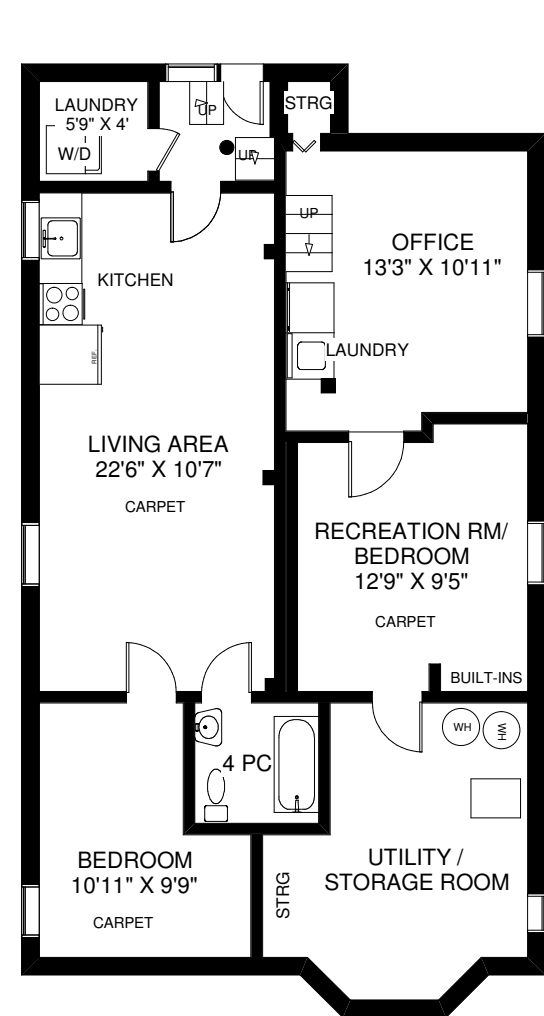
WALK-OUT TO DECK
 22' X 15'



MAIN FLOOR
 APPROXIMATELY 1,089 SQ FT
 (INCLUDING MUD ROOM)



SECOND FLOOR
 APPROXIMATELY 1,079 SQ FT
 (INCLUDING SUN ROOM)



LOWER FLOOR
 APPROXIMATELY 1,089 SQ FT

Note: Measurements & Calculations are approximate. Provided as a guideline only.

FLOOR PLANS BY KIM DORNEY
 647-989-6526