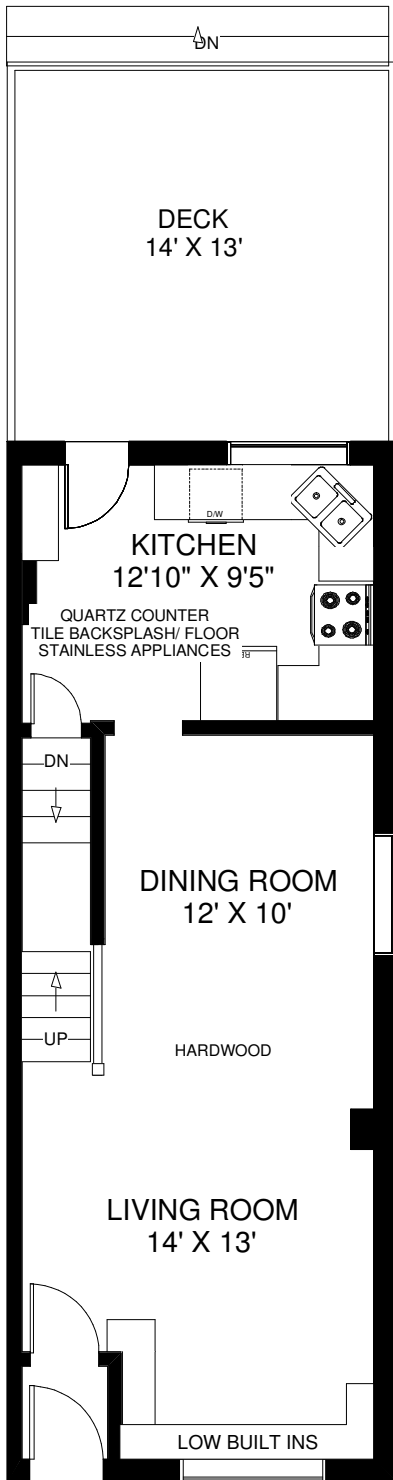
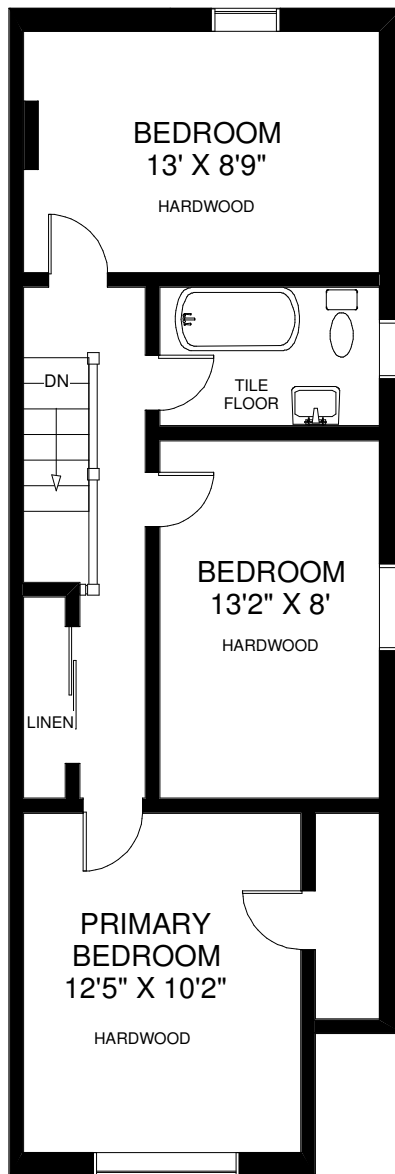


# 435 DAVISVILLE AVENUE

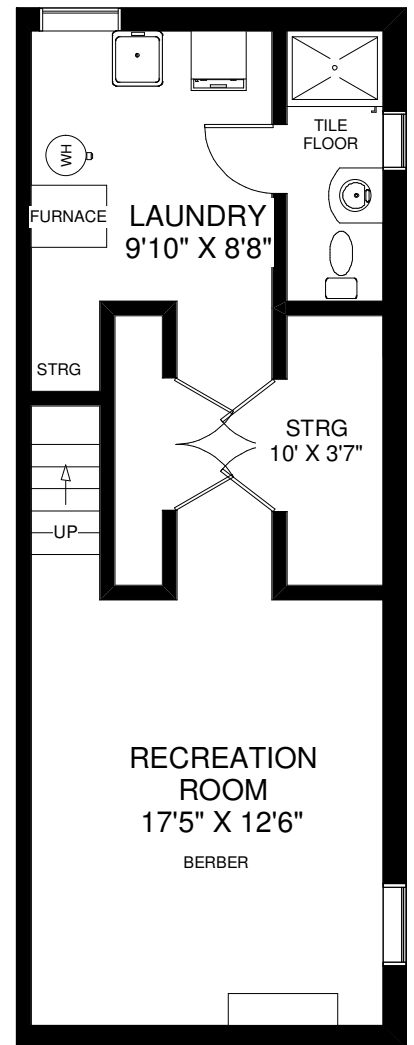
**THE JULIE KINNEAR TEAM**  
Sales Representatives  
Keller Williams Neighbourhood Realty  
(416) 236-1392



**MAIN FLOOR**  
APPROXIMATELY 535 SQ FT



**SECOND FLOOR**  
APPROXIMATELY 600 SQ FT



**LOWER FLOOR**  
APPROXIMATELY 535 SQ FT

Note: Measurements & Calculations are approximate. Provided as a guideline only.