

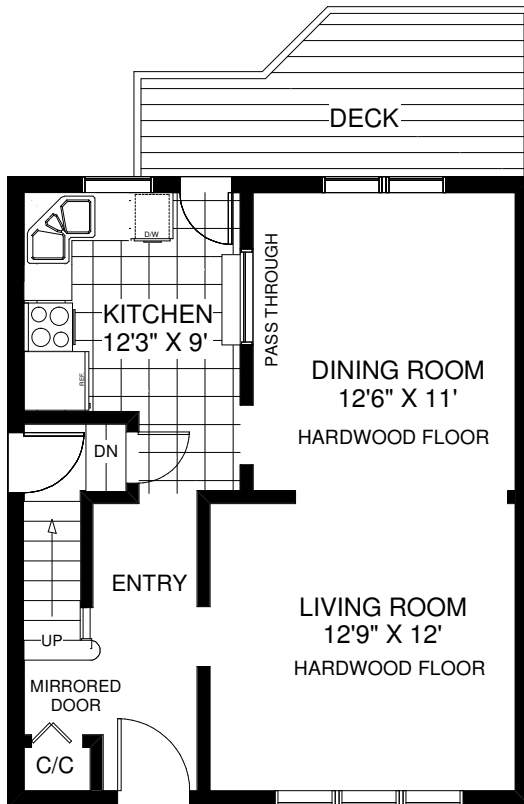
518 MILLWOOD ROAD

JULIE KINNEAR

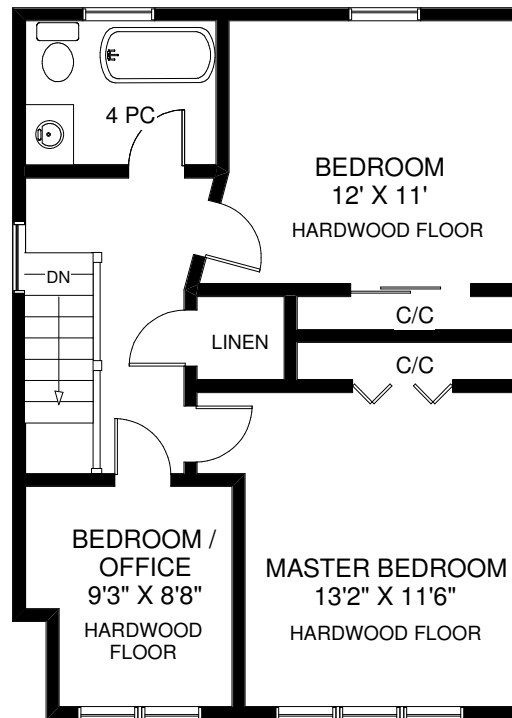
Sales Representative

Royal LePage Real Estate Services Ltd., Brokerage

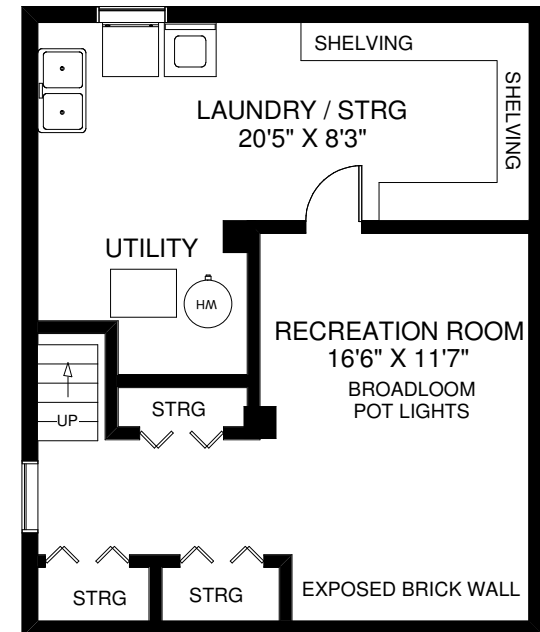
(416) 762-8255



MAIN FLOOR
APPROXIMATELY 599 SQ FT



SECOND FLOOR
APPROXIMATELY 649 SQ FT



LOWER LEVEL
APPROXIMATELY 599 SQ FT

FLOOR PLANS BY KIM DORNEY
647-989-6526

Note: Measurements & Calculations are approximate. Provided as a guideline only.