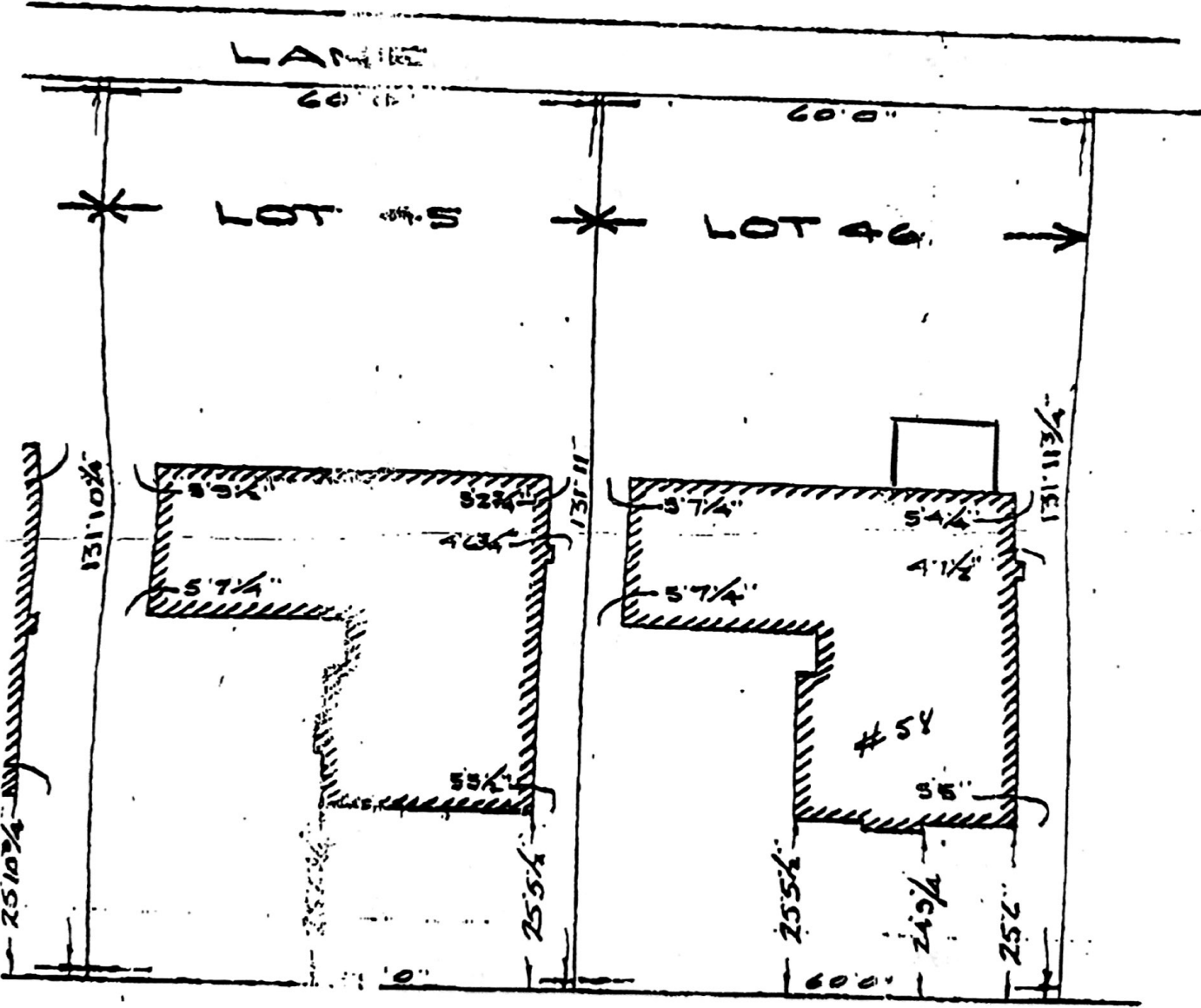


TS 44.45.16 REG'D PLAN 4868  
TOWNSHIP OF ETOBICOKE  
COUNTY OF YORK

SCALE = 1" = 20'



UNNYLEA AVE.

BROWN, SMITH & ASSOCIATES

1100 SHEPPARD AVENUE EAST  
TORONTO, ONTARIO M2X 1L7  
JAN. 4TH 1982

per W. J. Schwan  
Ontario Land Surveyor